

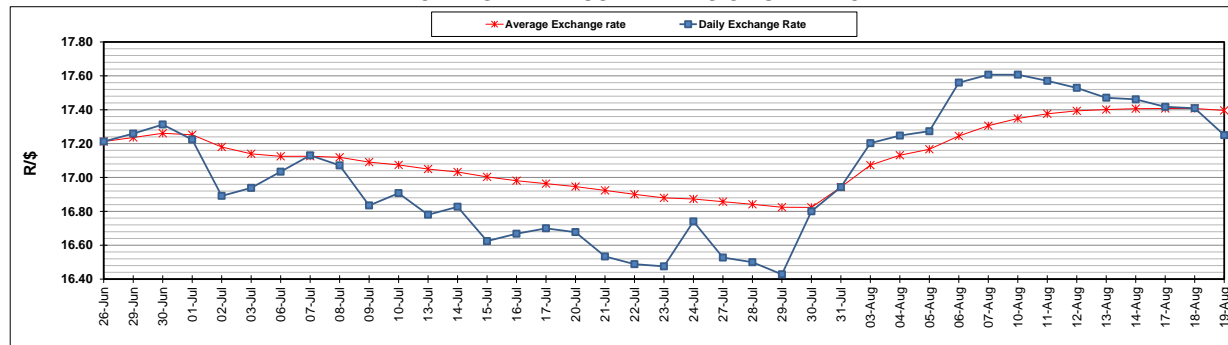
	PETROL 95 ULP	PETROL 93 ULP & LRP	DIESEL 0.05%	DIESEL 0.005%	ILL. PAR.
GAUTENG PUMP PRICE (SA c/l) AS FROM 05/08/2020	1,517.000	1,488.000	-	-	-
WHOLESALE PRICE (SA c/l) AS FROM 05/08/2020	-	-	1,348.560	1,352.960	742.828
SINGLE NATIONAL MAXIMUM RETAIL PRICE	-	-	-	-	934.000
BASIC FUEL PRICE - 19/08/2020 (SA c/l)	574.662	564.735	570.169	575.177	505.976
PRESS RELEASE CONTRIBUTION TO BFP 05/08/2020 - 19/08/2020 (SA c/l)	569.770	550.770	597.630	602.030	538.128
UNIT OVER/(UNDER) RECOVERY - 19/08/2020 (SA c/l)	(4.892)	(13.965)	27.461	26.853	32.152
AVERAGE BASIC FUEL PRICE 31/07/2020 - 19/08/2020	563.534	553.763	577.352	581.734	513.786
AVERAGE UNIT OVER/(UNDER) RECOVERY 31/07/2020 - 19/08/2020	5.165	(4.065)	10.635	10.653	15.985

ANALYSIS MOVEMENT OF AVERAGE OVER/(UNDER) RECOVERY

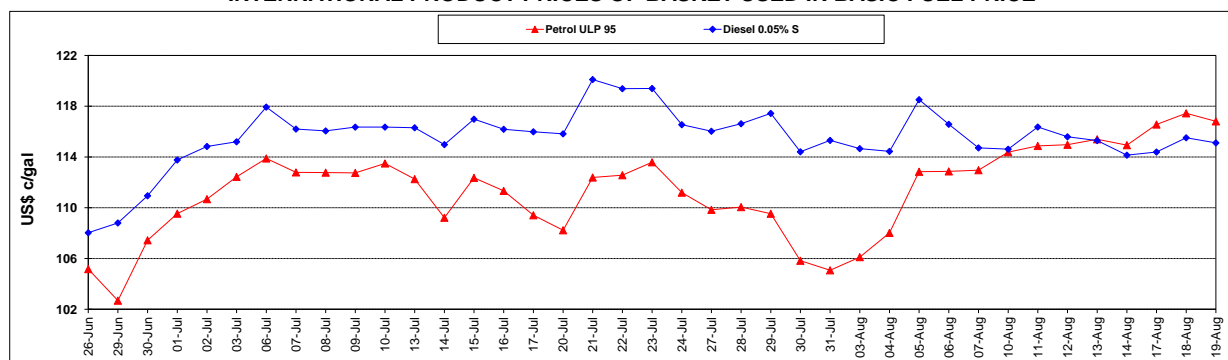
	PETROL 95	PETROL 93	DIESEL 0.05%	DIESEL 0.005%	ILL. PAR.
- MOVEMENT IN INTERNATIONAL PRODUCT PRICES	23.720	14.170	29.645	29.808	32.902
- MOVEMENT IN EXCHANGE RATE	(18.555)	(18.234)	(19.010)	(19.155)	(16.917)
AVERAGE UNIT OVER/(UNDER) RECOVERY 31/07/2020 - 19/08/2020	5.165	(4.065)	10.635	10.653	15.985

R/\$ EXCHANGE RATE - (R/\$17.2500 - 19/08/2020)

EXCHANGE RATE USED IN BASIC FUEL PRICE



INTERNATIONAL PRODUCT PRICES OF BASKET USED IN BASIC FUEL PRICE



BASIC FUEL PRICE IN SA CENTS PER LITRE

